

1 Get The App

- 1.1 - Download and install the Smart Life app.
- 1.2 - Sign up for your free account and log in on your device.



Android QR Code



Apple QR Code



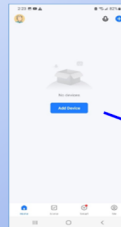
2 Prepare Your Phone or Tablet.

- 2.1 - Enable Bluetooth on your Device.
 - 2.2 - Connect your phone or tablet to the Wi-Fi connection you wish to use with your Bulldog.
- Note: The connection must use the 2.4GHz Wi-Fi band, either in a dual band SSID or dedicated 2.4GHz SSID.



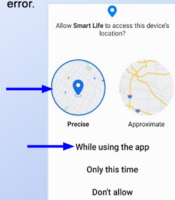
3 Open Your Smart Life App

- 3.1 - Tap on "Add Device"



4 Allow Precise Location services

- 4.1 - "Precise is required so Smart Life can find your Wi-Fi Network and search for nearby devices.
- 4.2 - Selecting "Approximate" location may result in an error.



5 Bulldog Controller Pairing Mode

- 5.1 - Blue LED is flashing: Your Bulldog Controller is in Bluetooth pairing mode.
- 5.2 - Blue LED not flashing: Hold the Open/Close Button for "8 Seconds", then release it. The Blue pairing LED will begin to flash momentarily.

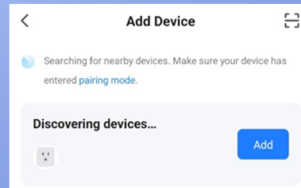


Blue Flashing Light

Open / Close Button

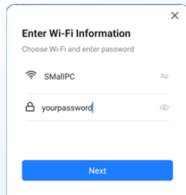
6 Add your Bulldog to Smart Life

- 6.1 - The Bulldog will now appear in the Discovering devices section of the Add Device screen.
- 6.2 - Tap the "Add" Button



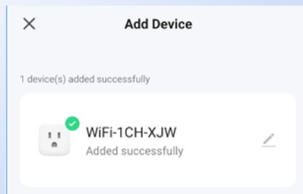
7 Enter Wi-Fi Information

- 7.1 - Smart Life should show your network name. If not, go back to Step 2.
- 7.2 - Enter your Wi-Fi password and hit "Next".
- 7.3 - Wait for the Add Device process to finish.



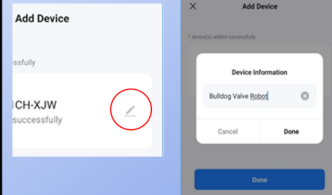
8 Pairing Is Complete

- 8.1 - You will see an "Added Successfully" message when the pairing is complete.



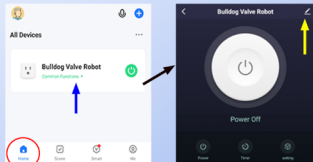
9 Change Your Device Name

- 9.1 - Tap the pencil icon on the right to rename your Bulldog Device. Example: Bulldog Water Valve.
- 9.2 - Tap "Done" when complete.



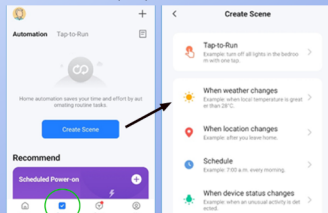
10 Access Your New Controls

- 10.1 - Tap the "Home" icon. (Red Circle)
- 10.2 - Select the Bulldog Valve Robot icon (Blue Arrow)
- 10.3 - On the control screen, tap the power button to open and close your valve.
- 10.4 - Tap the Pencil icon (Yellow Arrow) for additional functions including linking to Google & Alexa.



11 Create Scenes - Optional

- 11.1 - Tap the "Scene" icon. (Green Circle)
- 11.2 - Tap the "Create Scene" button and follow on-screen prompts to create custom automations.



12 Additional Technical Support

We're Here To Help!
Use one of the methods below to find helpful info for any issue you may have.

Here's our Full
Smart Life
Technical Guide



Here's our Additional
Support Page



<https://www.econetshop.com/technical-documents>
<https://www.econetshop.com/support>
Email: support@econetcontrols.com